

CorrieandCo

INDEPENDENT SALES & LETTING AGENTS



19 Egremont Street

Millom, LA18 4EA

Offers In The Region Of £59,000



19 Egremont Street

Millom, LA18 4EA

Offers In The Region Of £59,000



Approach

UPVC double glazed front door with frosted window inset.

Entrance Hall

14'10" (4.522)

The Entrance Hall has a double radiator and thermostat and carpeted flooring leading to the second reception room.

Reception One

10'7" x 12'10" (3.228 x 3.926)

Aluminium double glazed frame window to the front. The central feature of the room is the feature fireplace with white painted wooden surround and slate hearth. There is also a single radiator and thermostat, one double power point and a TV aerial. Open access to the second reception room.

Reception Two

10'7" x 12'10" (3.228 x 3.926)

Aluminium frame double glazed window to the rear. There is a cream painted brick fireplace with wooden mantle and picture rail. Single radiator and thermostat, one double power point, one single power point and a telephone point. Open access to reception room one and a doorway to the kitchen.

Kitchen

7'10" x 8'10" (2.397 x 2.714)

Aluminium frame double glazed window to the side aspect.

The kitchen has been fitted with a good range of attractive units with metallic style handles, oak style work surfaces and white splashback. There is a single sink unit with mixer tap and inset drainer, a cooker filter and

extractor with hood, fan and light, a Lamona gas four ring hob and single oven that is fan assisted with a grill, light and timer.

Neutral decoration, two double power points and one single power point. Doors to the outside and the second reception room.

Stairway Details

The traditional staircase leads from the hallway to the first floor landing.

First Floor Landing

14'0" x 5'3" (4.269 x 1.606)

The landing comprises of a single radiator and thermostat, one single power point and wooden doors to the rooms.

Bedroom One

10'11" x 13'11" (3.338 x 4.256)

Aluminium frame double glazed window to the front aspect.

The room has a single radiator and thermostat, one double power point and decor of cream with dark grey color fitted carpet.

Bedroom Two

12'9" x 8'0" (3.908 x 2.440)

Aluminium framed double glazed window to the rear aspect.

The room has a single radiator with thermostat and one double power point. The decor is of Magnolia with a dark grey color carpet.

Bathroom

8'8" x 7'10" (2.662 x 2.402)

Frosted aluminium framed windows to the rear.

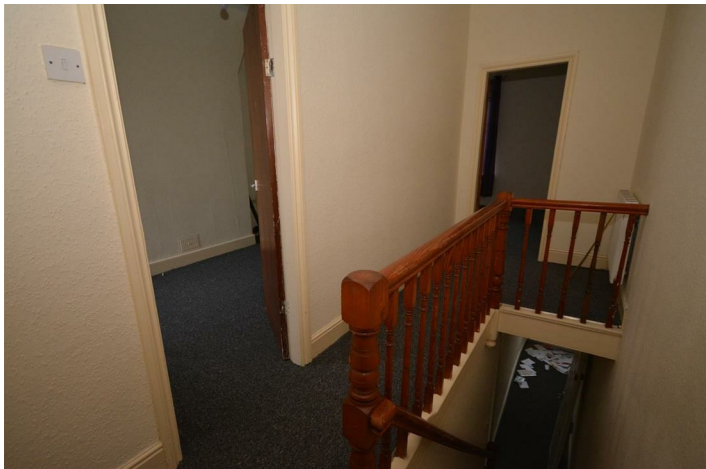
This is a modern three piece fitted suite in white with splashback. There is a low level bath with shower attachment, a low level flush WC and pedestal sink. Double radiator with thermostat and shelving space within the cupboard with the Baxi boiler.

Exterior Front

UPVC double glazed door to the front.

Exterior Rear

Rear yard with concrete floor and wall following the boundary. There is an outbuilding attached to the rear of the kitchen.



Road Map



Hybrid Map



Terrain Map



Floor Plan

Corrie and Co aim to sell your property at the best possible price in the shortest possible time. We have developed a clear marketing strategy to ensure that your property is fully exposed to the local, regional and national market place and we are confident that we can provide a marketing service second to none. Our Sales Team offer:

- Full colour contemporary sales literature with floorplans
- A full programme of local / regional advertising and promotion on the Corrie and Co and Rightmove websites
- 24/7 promotion in our Barrow, Ulverston and Millom offices
- Professional viewing service and prompt feedback
- Experienced, friendly staff
- Eye catching 'For Sale' board

To ensure your move is looked after, we can help you with an Energy Performance Certificate and arrange a free mortgage and finance review. We also provide a competitive No Sale – No Fee conveyancing service with well known and trusted local solicitors. Our valuation and sales advice is impartial, completely free with no obligation.

Unlike many High Street Estate Agency chains, Corrie and Co are wholly independent and can therefore recommend the mortgage and lender that is most suitable for your needs. Our aim is to provide quality advice and expertise at all times so that you can make an informed decision every step of the way.

